

Please Leave With Homeowner



User Guide

# Door Information

Bifold Make: \_\_\_\_\_

Bifold Configuration: \_\_\_\_\_

Installer: \_\_\_\_\_

Date of Install: \_\_\_\_\_

Contact Information: \_\_\_\_\_

# Contents

<u>Title</u>	<u>Page Number</u>
Maintenance	4-5
Self Cleaning Glass	6
Electronic Blinds	7
The Continental Bifold	8
T-Handle	9
Operating the door	10
The Durafold 1000	11
Pendulum Handle	12
Operating the door	13

# Maintenance

## **Cleaning**

In areas within the direct influence zones of salt water, industrial chemical plants, blast furnaces or other aggressive emission sources, the doors should be cleaned at least every three months.

In a cleaner environment every six months should be sufficient.

## **Cleaning Procedure**

Wash down with clean warm water containing a non-alkaline liquid detergent (in a concentration which can be handled safely with bare hands) using a non-abrasive cloth, sponge or soft bristle brush. This will remove grime, grease and any excess chalking. All ridges, grooves, joints and drainage channels where salt or other deposits can collect should be well washed out.

Rinse thoroughly with clean water.

Dry using a soft cloth or leather.

# Maintenance

## **Polishing**

The doors can be polished with a soft cloth to restore gloss and colour uniformity.

(please remember not to use a overly abrasive product or abrasive cloth)

For extra protection a wax polish can be applied once or twice a year again polishing with a soft cloth to restore gloss / finish.

## **Door Hardware Maintenance**

Hinges, wheels and locking mechanisms should be lubricated periodically to minimise wear and to ensure smooth operation.

Use a silicon based product when lubricating the hardware (e.g. Furniture Polish or Silicone Spray). Silicone Spray is available from car accessory shops.

# Self Clean Glass

## Cleaning and Maintenance

Regular cleaning of this product should not normally be necessary. However, extended dry periods can cause a build-up of contaminants on the coated surface. Under such circumstances, hose down the glass and let it dry naturally. Spraying should be conducted during the coolest part of the day and not in direct sunlight. It is best to spray from top to bottom in a zig zag pattern. (Note: Pressure washers should not be used)

Periodically, the surface may become contaminated with stubborn marks that cannot easily be removed by hosing down the glass. If this is the case the glass should be hosed down to remove any accumulation of dirt, cleaned with warm soapy water and a soft cloth followed by a final water rinse. Do not trap dirt between the cloth and glass surface. Rubber squeegees should not be used as they may trap grit and damage the coated surface of the glass.

If silver-coloured areas or grease appear on the surface of the glass - this means that the coating is working and the oil-like stains will be washed away next time it rains.

Do not use abrasive cleaners, cream cleaners or functional (e.g. anti-mist) type products on the self cleaning glass as they will damage the coated surface.

Under no circumstances should any metal objects or harsh chemical cleaners be used to clean or otherwise come in contact with the coated surface. Steel scrapers, razor blades, steel wool, squeegees, rings etc will cause scratching and may lead to permanent damage of the coating.

# Electronic Blinds

## **Blind Maintenance**

The blinds are integrated into the glazed unit and thus do not require any maintenance.

## **Control Unit Maintenance**

It is advisable to remove the control unit from the bifold and store in a safe place before folding the doors back into an open position. If not removed the control unit may become damaged between the closing panels.

The control unit for this product will require charging from time to time.

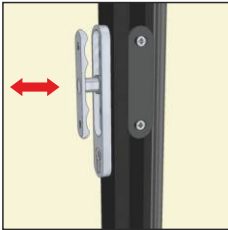
# Continental Bifold



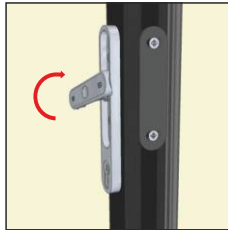


# T-Handle

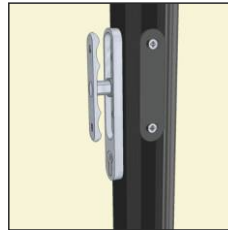
## Operating



Push to make T-Handle pop out.



Turn T-Handle 180° to unlock shoot bolts.  
(Please ensure you turn the handle 180° before opening the doors. If the shoot bolts are not fully retracted they may damage the door or frame)



If required use T-Handle to pull doors open.  
(open in doors only and when closing an open out door)



Push T-Handle back into position before fully opening the doors.  
(This will help prevent damaging the handle or the other door sash.)

## Locking The Doors

Begin by closing all folding panels with shoot bolts.  
As each set of panels are closed pop the T-Handle out and reverse the opening process.

(Make sure doors are fully closed before operating the handle to bring the shoot bolts down.)

Use the T-Handle to pull doors toward you where needed.

(Usually required when closing an open out door)

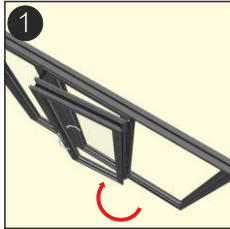
## Keys

**Keys must be removed** before opening the doors fully.

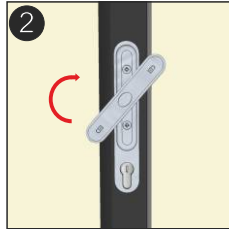
If the keys are left in the lock when opening the doors they may be damaged when panels are folded. Leaving the keys in could also damage the metal frames and paint when panels are folded.

# Operating

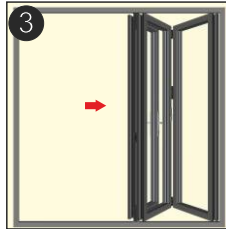
## Traffic Door All Panels Move One Way



1 Fold traffic door back onto the magnets on the adjacent panel.



2 Unlock shoot bolts using T-Handle. (Turn Handle 180°)

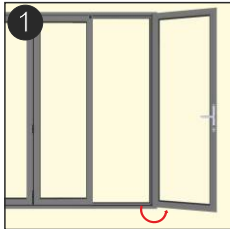


3 Push or pull panels to begin folding the doors.

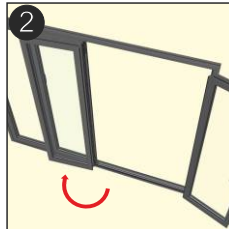


4 Repeat steps 2-3 with the remaining panels. Continue sliding the panels until door is completely open.

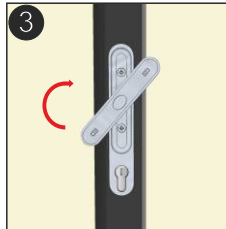
## Traffic Door with Slave Door



1 Open main Traffic door.



2 Unlock finger latches on the side of the slave door and open back onto the magnets on the adjacent panel.

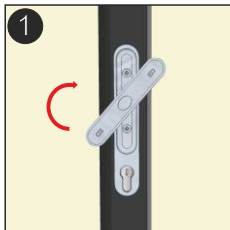


3 Unlock shoot bolts using T-Handle. (Turn Handle 180°) Push or pull panels to begin folding the doors.

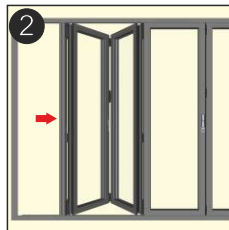


4 Repeat step 3 with the remaining panels. Continue sliding the panels until door is completely open.

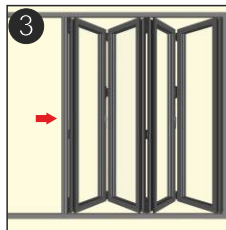
## No Traffic Door



1 Unlock shoot bolts using T-Handle. (Turn Handle 180°)



2 Push or pull panels to begin folding the doors.



3 Repeat steps 1-2 with the remaining panels.



4 Continue sliding the panels until door is completely open.

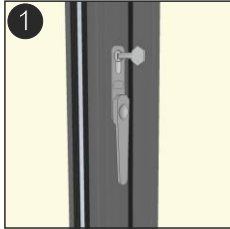
When closing: First close and lock all intermediate panels. Close the traffic door last.  
Never use the traffic door or lever-lever handle to drag the bifold closed.

# Durafold 1000 Bifold

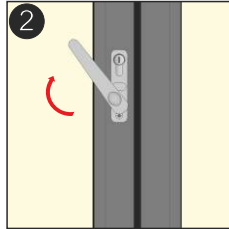


# Pendulum Handle

## Operating

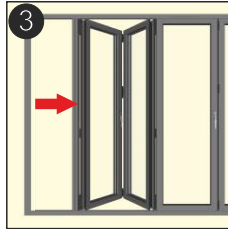


Unlock handle

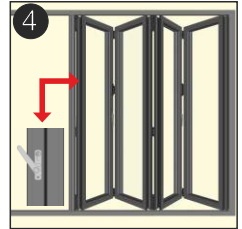


Turn Handle to approximately an 11 o'clock position to unlock shoot bolts.

(Make sure you fully turn the handle before using the doors.  
If the shoot bolts are not fully retracted they may damage the door or frame)



If required use handle to pull or push doors open.



Leave handle in this position and open the doors.

## Locking The Doors

Begin by closing all intermediate folding panels.

As each set of panels are closed operate the handle in reverse to the opening process. (Make sure doors are fully closed before operating the handle to bring the shoot bolts down.)

Use the Handle to pull doors toward you where needed. (Usually required when closing an open out door)

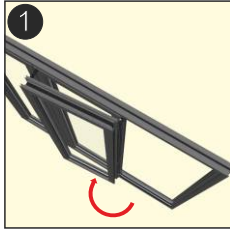
## Keys

**Keys must be removed** before opening the doors fully.

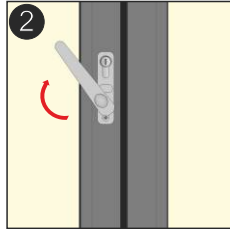
If the keys are left in the lock when opening the doors they may be damaged when panels are folded. Leaving the keys in could also damage the metal frames and paint when panels are folded.

# Operating

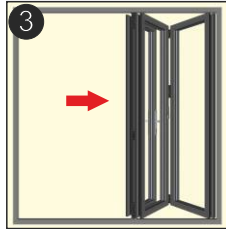
## Traffic Door All Panels Move One Way



1 Fold traffic door back onto the magnets on the next adjacent panel.



2 Unlock shoot bolts using handle. (Turn until the handle is in an 11 o'clock position)

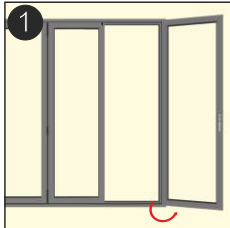


3 Push or pull panels to begin to fold the doors.

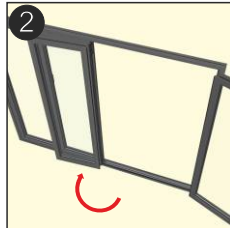


4 Repeat steps 2-3 with the remaining panels. Continue sliding the panels until door is completely open.

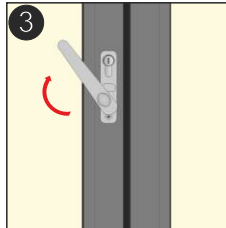
## Traffic Door with Slave Door



1 Open main Traffic door.



2 Unlock finger latches on side of the slave door and open back onto the magnets on the adjacent panel.

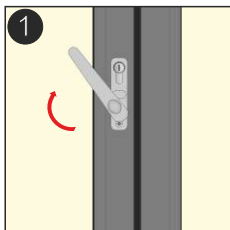


3 Unlock shoot bolts using handle. (Turn until the handle is in an 11 o'clock position). Push or pull panels to begin to fold the doors.

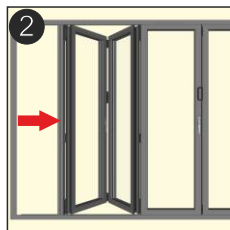


4 Repeat steps 3 with the remaining panels. Continue sliding the panels until door is completely open.

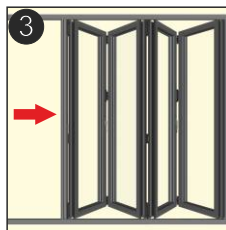
## No Traffic Door



1 Unlock shoot bolts using handle. (Turn until the handle is in an 11 o'clock position)



2 Push or pull panels to begin to fold the doors.



3 Repeat steps 1-2 with the remaining panels.



4 Continue sliding the panels until door is completely open.

When closing: First close and lock all intermediate panels. Close the traffic door last.

Never use the traffic door or lever-lever handle to drag the bifold closed.